



**ALASKA DIVISION OF HOMELAND SECURITY &  
EMERGENCY MANAGEMENT**



**SITUATION REPORT 23-037 • FEBRUARY 06, 2023**

Toll-Free 1.800.478.2337

Anchorage Area 907.428.7000

SEOC 907.428.7100

<p><b><u>SEOC Preparedness Level</u></b> Level 1 – Routine Operations</p>	<p><a href="http://ready.alaska.gov">http://ready.alaska.gov</a></p>	<p><b><u>National Terrorism Advisory System:</u></b> <a href="#">Read the NTAS Bulletin here</a></p>
<p><b><u>Maritime Security (MARSEC)</u></b> Level:1-Minimum Appropriate Security Measures</p>	<p><b>WHO Novel Coronavirus Pandemic (COVID-19):</b> <a href="#">2019 Novel Coronavirus</a></p>	<p><b><u>Alaska Military Installation Force Protection Level:</u></b> FPCON Bravo</p>

(Significant changes from previous situation reports are in red.)

**Significant Issues:**

**State of Alaska Department of Health (DOH)**

The DOH is leading the State of Alaska COVID-19 Recovery, supported by the SEOC and other state departments as required.

For current COVID-19 information, see:

<https://covid19.alaska.gov/>

<https://www.cdc.gov/coronavirus/2019-ncov/index.html>

**NTAS Bulletin**

The U.S. Department of Homeland Security has issued an updated National Terrorism Advisory Bulletin. The updated bulletin can be viewed at the below link

To read current or expired advisories, click the link below:

<https://www.dhs.gov/national-terrorism-advisory-system>

**Travel Alerts and Conditions**

For current driving conditions dial 511 or link to <https://511.alaska.gov/>

**Barry Arm Landslide / Tsunami Risk**

For the latest information on the Barry Arm Landslide and Tsunami risk, click here:

[DGGs Barry Arm Landslide and Tsunami Hazard](#)

**Recent Earthquakes**

USGS Earthquake Information: <http://earthquake.usgs.gov/>

National Tsunami Warning Center: <http://tsunami.gov/>

**Alaska Volcanoes**

**Great Sitkin** Alert Level: **Watch** and Aviation Color Code: **Orange**  
**Semisopchnoi** Alert Level: **Watch** and Aviation Color Code: **Orange**  
**Takawangah** Alert Level: **Advisory** and Aviation Color Code: **Yellow**  
For Alaska Volcano updates, go to: <https://www.avo.alaska.edu/>

### **Air Quality Index (AQI) Advisories**

For the most up to date Air Quality Index Advisories:

<http://dec.alaska.gov/Applications/Air/airtoolsweb/Home/Index>

### **Spills of Oil and Hazardous Substances**

The ADEC Spill Prevention and Response page is located at:

<http://dec.alaska.gov/spar/ppr/spill-information/response/>

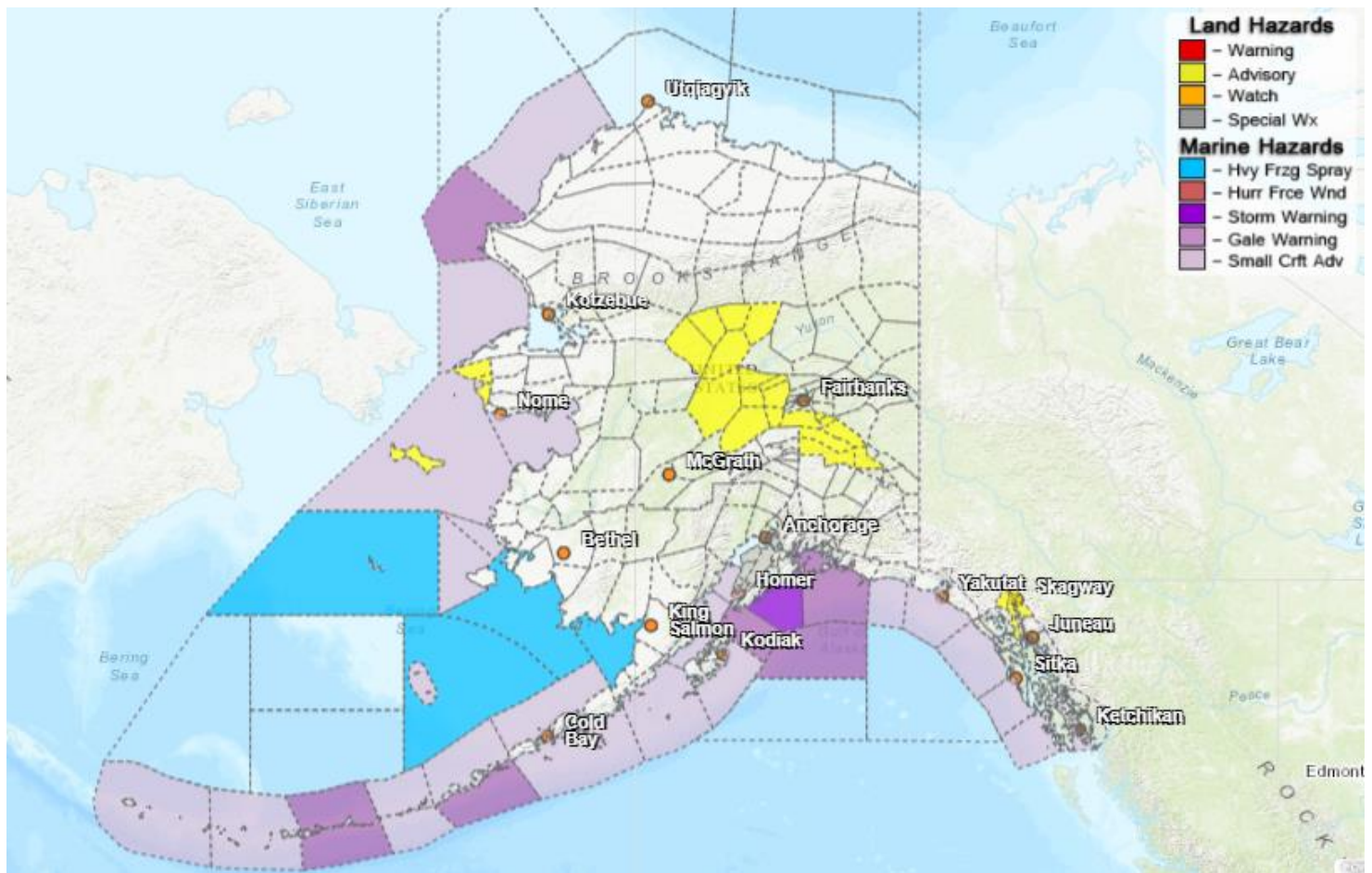
### **Alaska Cyber Security Information**

State Employees may sign up for cyber security notifications and alerts at

<https://oit.alaska.gov/security>

CISA-Cybersecurity Services and Tools: [www.cisa.gov/free-cybersecurity-services-and-tools](http://www.cisa.gov/free-cybersecurity-services-and-tools)

### **Significant Weather:**



Wind chill warning in effect for the Western Arctic Coast for blowing snow and wind chills as low as 65 below until 6PM this afternoon.

Flood advisory issued until 1pm for the Ketchikan Gateway Borough near Ward Lake Recreation area for minor flooding due to excessive rainfall.

Special weather statements in effect for the following areas:

- Anchorage – Snow accumulation of 2 to 4 inches through Monday evening.
- Western Kenai Peninsula – Periods of moderate to heavy snow fall, with 2 to 4 inches of accumulation expected south of Ninilchik through Monday morning.

Wind advisories in effect for the following areas:

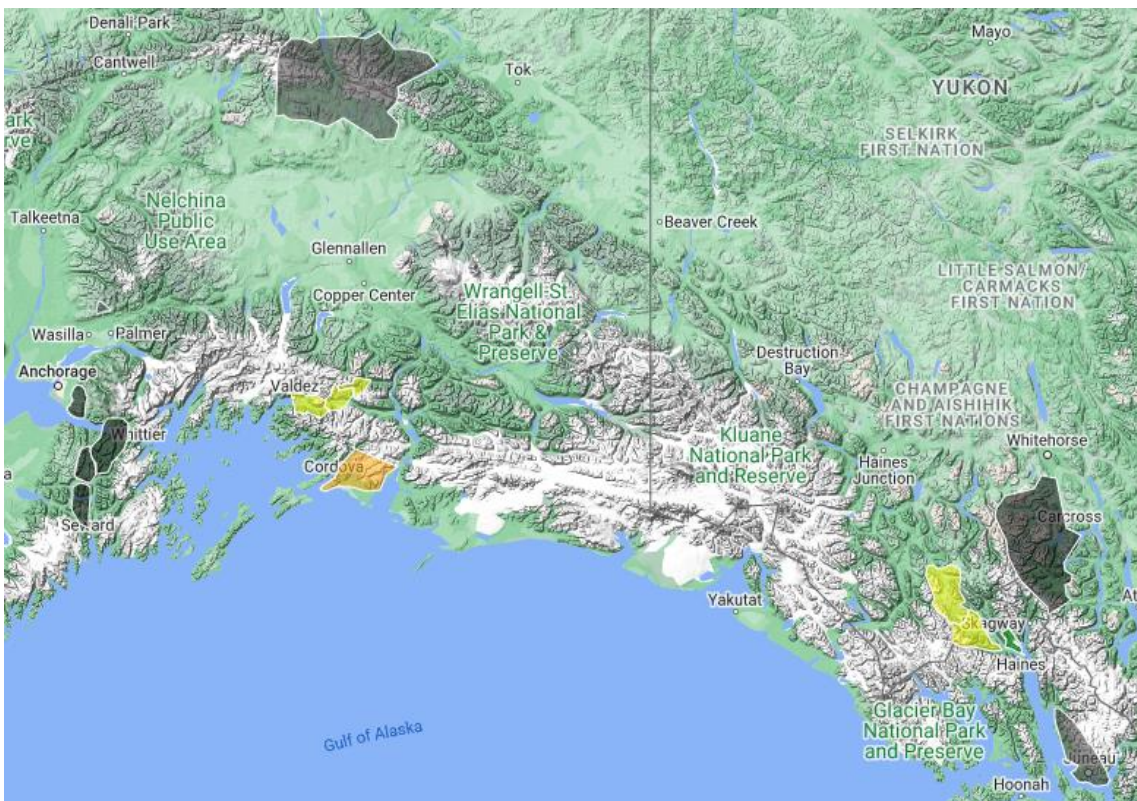
- Eastern Alaska Range – South winds of 30mph with gusts up to 55mph expected until 6am Tuesday.
- Deltana and Tanana Flats – East winds of 30mph with gusts up to 50mph expected until midnight tonight.

Winter weather advisories in effect for the following areas:

- St. Lawrence Island - Winds gusting up to 45mph causing blowing snow and low visibility expected until 6am Tuesday.
- Upper Koyukuk Valley and Central Interior – Winds gusting up to 40mph causing low visibility until noon today.

For more information and the most current weather, go to: <http://www.weather.gov/arh>.

### **Avalanche Forecast:**



- Considerable advisory level at all elevations in Turnagain Pass
- Considerable advisory level above 2,000 ft, moderate advisory level from 1,000 to 2,000ft and low advisory level below 1,000 ft near Cordova.
- Moderate avalanche danger at all elevations in Valdez area.
- Moderate avalanche danger above 2,500 ft in the Haines area.

Check the Avalanche Forecast Center closest to your area for the most up to date information on avalanche potential. <https://alaskasnow.org> or <https://www.weather.gov/afc/avalancheweather>

**The Next Situation Report:** will be **07 February 2023**. A significant change in the situation or the threat level will prompt an interim report. This report is posted on the internet at <https://ready.alaska.gov/sitrep>.

To register for email distribution, go to <http://list.state.ak.us/mailman/listinfo/dhsem.situation.report>. Direct questions regarding this report to the SEOC at 907-428-7100 or [seoc@alaska.gov](mailto:seoc@alaska.gov)